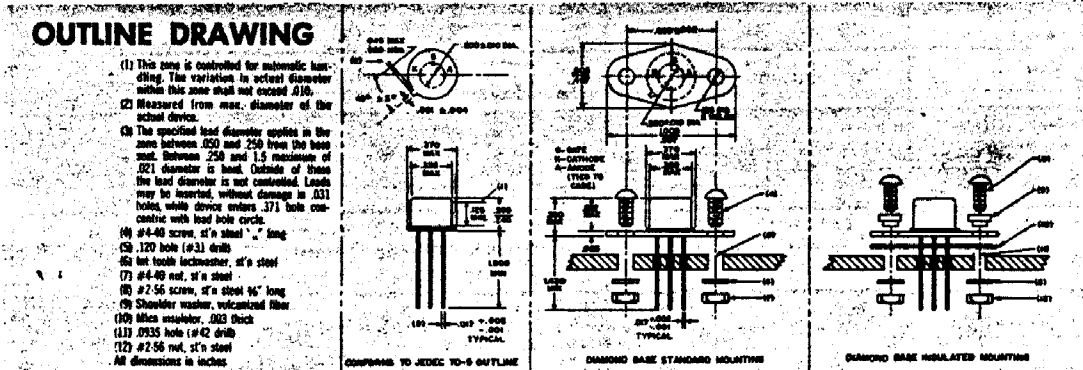
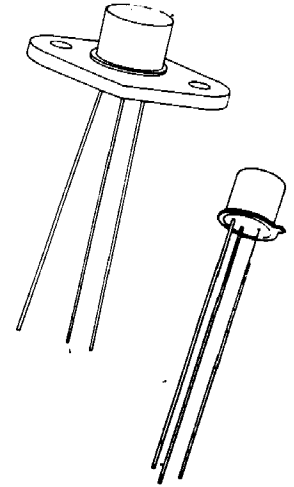


SCR

C6, C611

For High Volume Light Industrial, Computer, and Consumer Applications

- Low Cost
- All-diffused for Proved Reliability
- Popular Voltage Range—up to 200V
- Sensitive Gate (1 ma to Trigger)
- Standard TO-5 Package (C6) for Convenient Mounting
- Diamond Flange Option (C611) Simplifies Heat Dissipation



Types	Peak Forward Blocking Voltage, V_{FWM} $T_J = -40^{\circ}\text{C to } +125^{\circ}\text{C}$ $R_{GK} = 1000 \text{ OHMS}$	Working and Repetitive Peak Reverse Voltage $V_{ROM(wkg)}$ and $V_{ROM(rep)}$ $T_J = -40^{\circ}\text{C to } +125^{\circ}\text{C}$	Non-Repetitive Peak Reverse Voltage, $V_{ROM(non-rep)}$ (<5 Millisec.) $T_J = -40^{\circ}\text{C to } +125^{\circ}\text{C}$
C6U, C611U	25 Volts	25 Volts	40 Volts
C6F, C611F	50 Volts	50 Volts	75 Volts
C6A, C611A	100 Volts	100 Volts	150 Volts
C6G, C611G	150 Volts	150 Volts	225 Volts
C6B, C611B	200 Volts	200 Volts	300 Volts

MAXIMUM ALLOWABLE RATINGS

Peak Forward Voltage, PFV	300 Volts
RMS Forward Current, On-state (independent of conduction angle)	1.6 Amperes
Average Forward Current, On-state	Depends on conduction angle (See Charts)
Peak One Cycle Surge Forward (Non-repetitive) Current, I_{FM} (surge)	10 Amperes
Peak Gate Power, P_{GM}	0.1 Watt
Average Gate Power, $P_{G(AV)}$	0.01 Watt
Peak Gate Current, I_{GFM}	0.1 Ampere
Peak Gate Voltage, Forward & Reverse, V_{GFM} & V_{GRM}	6 Volts
Storage Temperature, T_{stg}	-40°C to +150°C
Operating Temperature	-40°C to +125°C
Peak non-recurrent surge forward current during turn-on time interval (Current rise time = 5.0 μsec Minimum).	40 Amperes